

MD State Plane 2,000-meter grid ties and coordinates shown in black
Geographic coordinates (latitude-longitude)
Shown near corners and 1.0° intervals (in black)

U.S. Geological Survey (USGS) US Topo digital 7.5-minute Series
Mason-Dixon, MD-PA quadangle, 2011
Hydrography derived from USGS National Hydrography Dataset, 2009
Topography generated from 1/3 arc-second National Elevation Dataset, 2000
Transportation from TeleAtlas Multinet Dataset, 2006-2010
Map published 2011 as a geoPDF document by USGS US TOPO,
conforms to US TOPO Product Standard 0.5.10

Reported magnetic north declination (center of Mason-Dixon quadrangle): 10.6° W
Estimated magnetic north declination (center of Mason-Dixon quadrangle): 10.61° W, changing by 0.01° W per year.)
To determine current magnetic declination see: <http://www.ngdc.noaa.gov/geomag/declination.shtml>

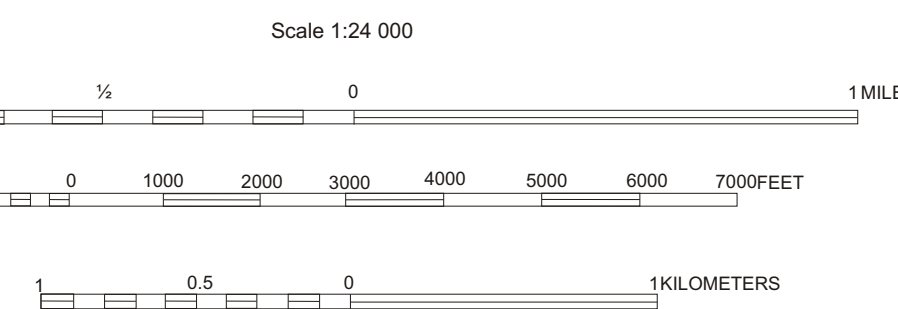
Cultural features shown from USGS Geographic Names Information System (GNIS) database, 2010

By
David K. Brezinski
2013

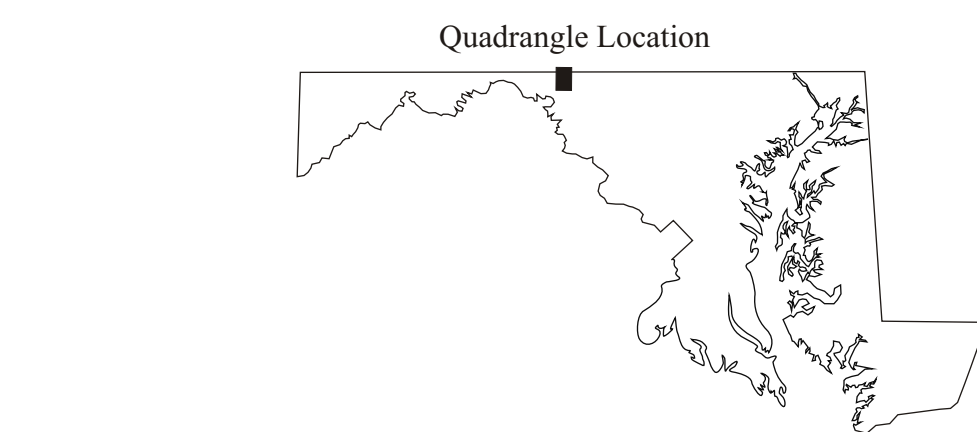


Adjoining 7.5-minute quadrangles
(Mason-Dixon quadrangle shaded)

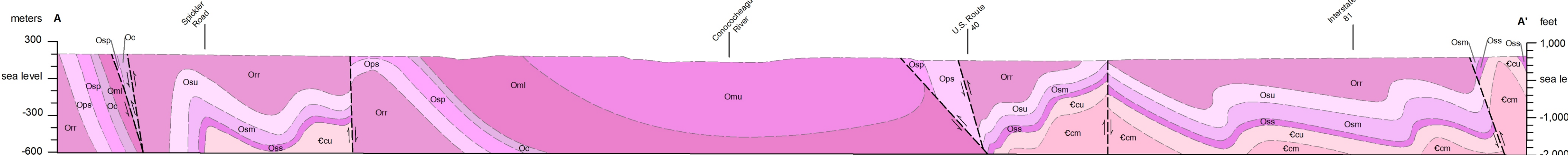
1	2	3	1 Mercersburg 2 Williamson 3 Greencastle
4		5	4 Clear Spring 5 Hagerstown 6 Hedgesville
6	7	8	7 Williamsport 8 Funktown



Contour Interval 20 Feet
National Geodetic Vertical Datum of 1929
(To convert elevations to North American Vertical Datum of 1988, subtract 1 foot
(To convert from feet to meters, multiply by 0.3048)



Cross Section A to A'
(no vertical exaggeration)



Use Constraint: These data represents results of data collection for a specific Department of Natural Resources, Maryland Geological Survey activity and indicate general existing conditions. As such, they are only valid for the intended use, content, time, and accuracy specifications. The user is responsible for the results of any application of the data for other than the intended purpose. The Maryland Geological Survey makes no warranty, express or implied, as to the use or appropriateness of the data and there are no warranties of merchantability or fitness for particular purpose or title. The Maryland Geological Survey makes no representation as to the accuracy or completeness of the data and may not be held liable for human error or defect. Data are only valid at 1:24,000 scale. Data should not be used at a scale greater than that.

Acknowledgements: This map partially funded by the Maryland State Highway Administration and the U. S. Geological Survey, National Cooperative Geologic Mapping Program, under USGS award number G12AC20414. The views and conclusions contained in this document are those of the author and should not be interpreted as necessarily representing the official policies, either expressed or implied, of the U. S. Government.

Geologic field mapping conducted in 2011-2013. The geologic map was compiled in digital form by Robert Conkwright of the Maryland Geological Survey.

The facilities and services of the Maryland Department of Natural Resources are available to all without regard to race, color, religion, sex, sexual orientation, age, national origin or physical and mental disability.

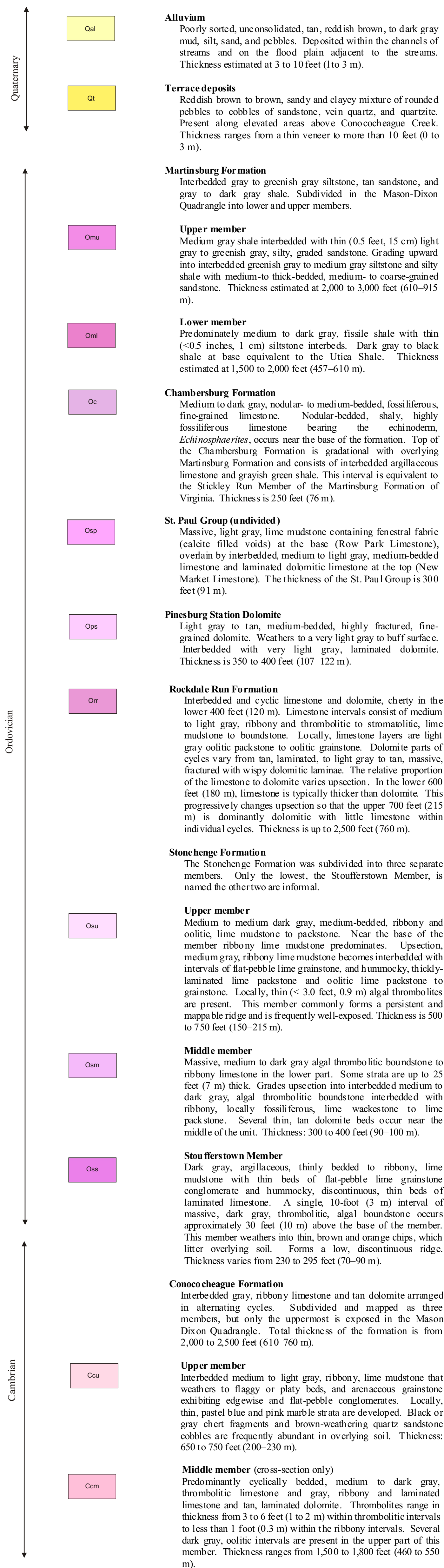
Copies of this map downloadable in digital form from: MARYLAND GEOLOGICAL SURVEY
<http://www.mgs.md.gov/>

Version: MASON2013.1
Released July 2013

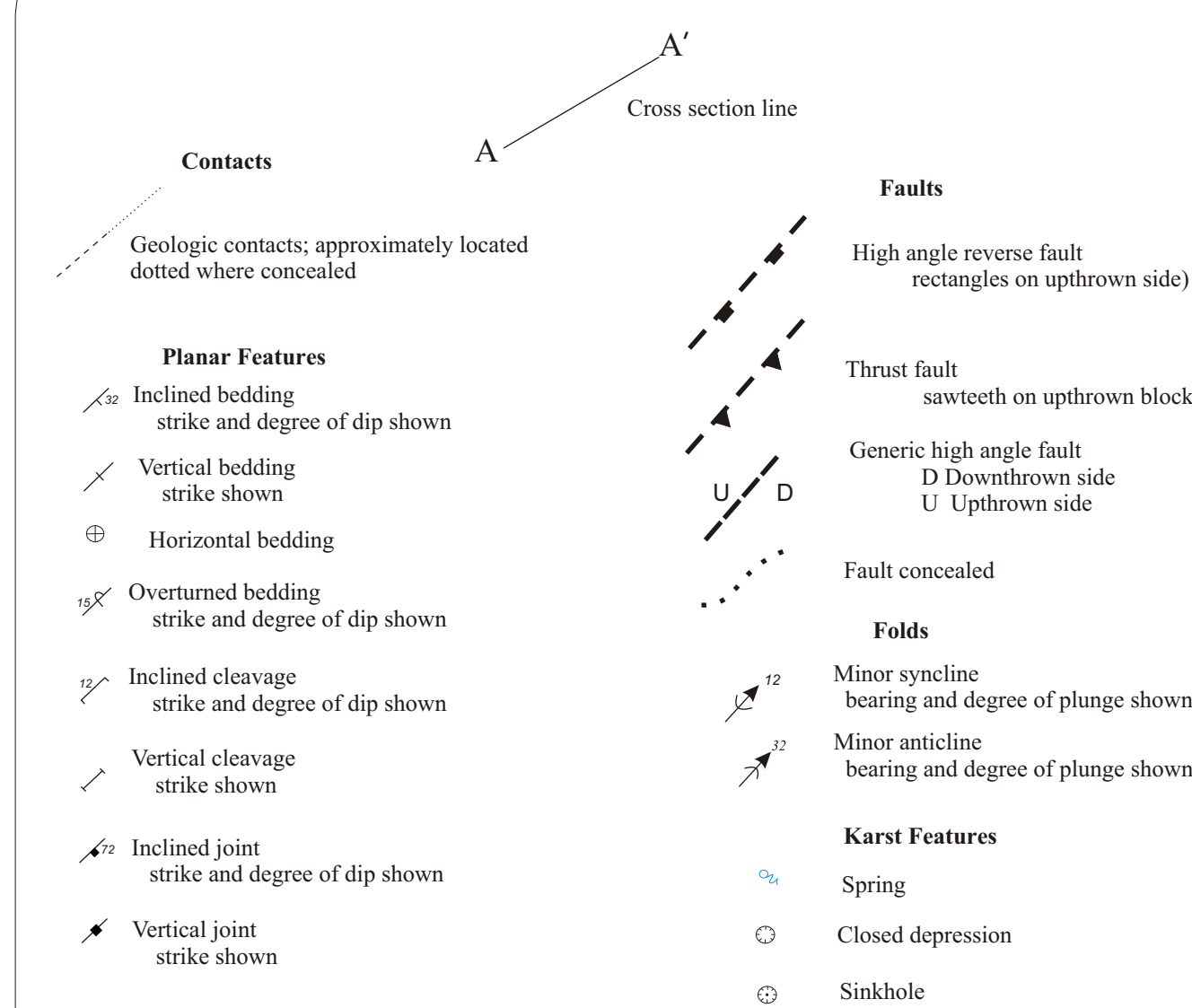
DEPARTMENT OF NATURAL RESOURCES
Joseph P. Gill
Secretary

Frank W. Dawson
Deputy Secretary

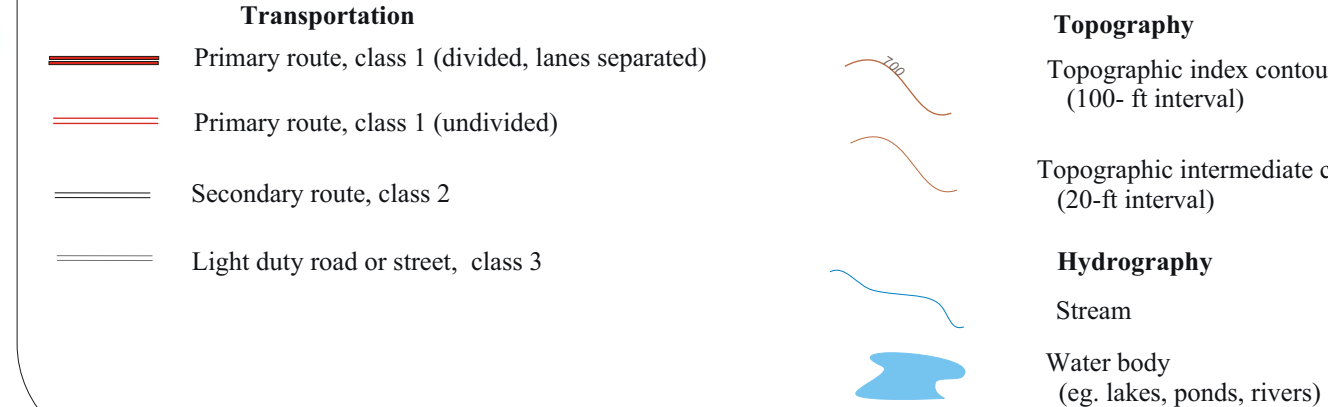
MARYLAND GEOLOGICAL SURVEY
Jeffrey Halka
Director



Explanation of Map Symbols



Base Map Symbols



STATE OF MARYLAND
Martin O'Malley
Governor

Anthony G Brown
Lieutenant Governor

